

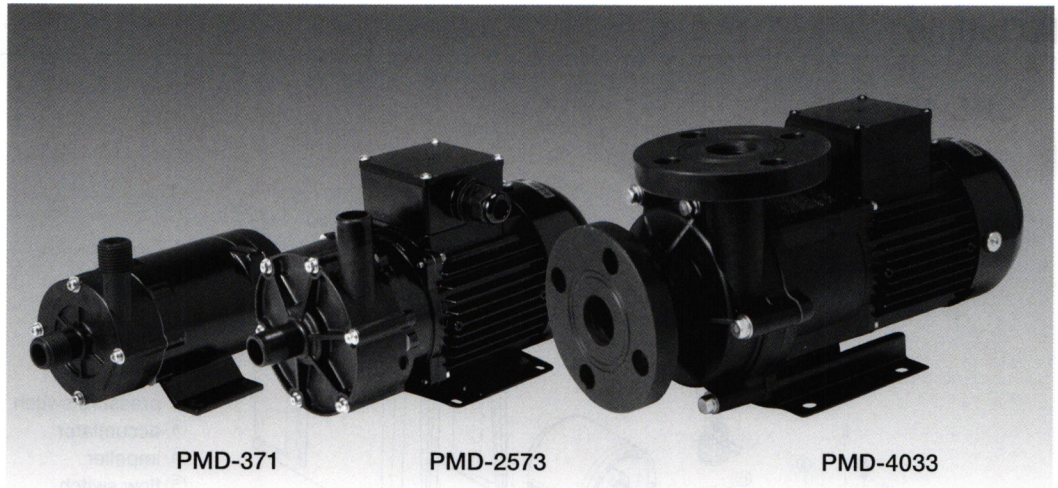
Magnet pump (For chemical and sea water)

International protection (IP44)

PMD

Magnet type

- 0531
- 221
- 371
- 421
- 581
- 641
- 643
- 1561
- 1563
- 2571
- 2573
- 4033
- 7533



■ Features of new models

- Efficiency About 35% improved
- Electric power costs About 20% can be reduced
- Noise About less 5dB than conventional models
- Vibration About 50% less than conventional models
- Small and light About 10% lighter than conventional models

■ Application

- Circulation of sea water
- Culture tank and water tank
- Waste water treatment equipment
- Drain chemical liquid
- Aquarium equipment
- PCB equipment
- Solar heating system
- Filter
- Bubble bath
- Etching equipment
- Photo development equipment
- Transfer of chemical liquid
- Cooling of NC machine
- Ice maker
- Machines for plating etc.

■ Characteristics

- Magnet type
- Totally enclosed indoor type motor
- Corrosion resistance performance
- Small size and excellent performance

■ Features

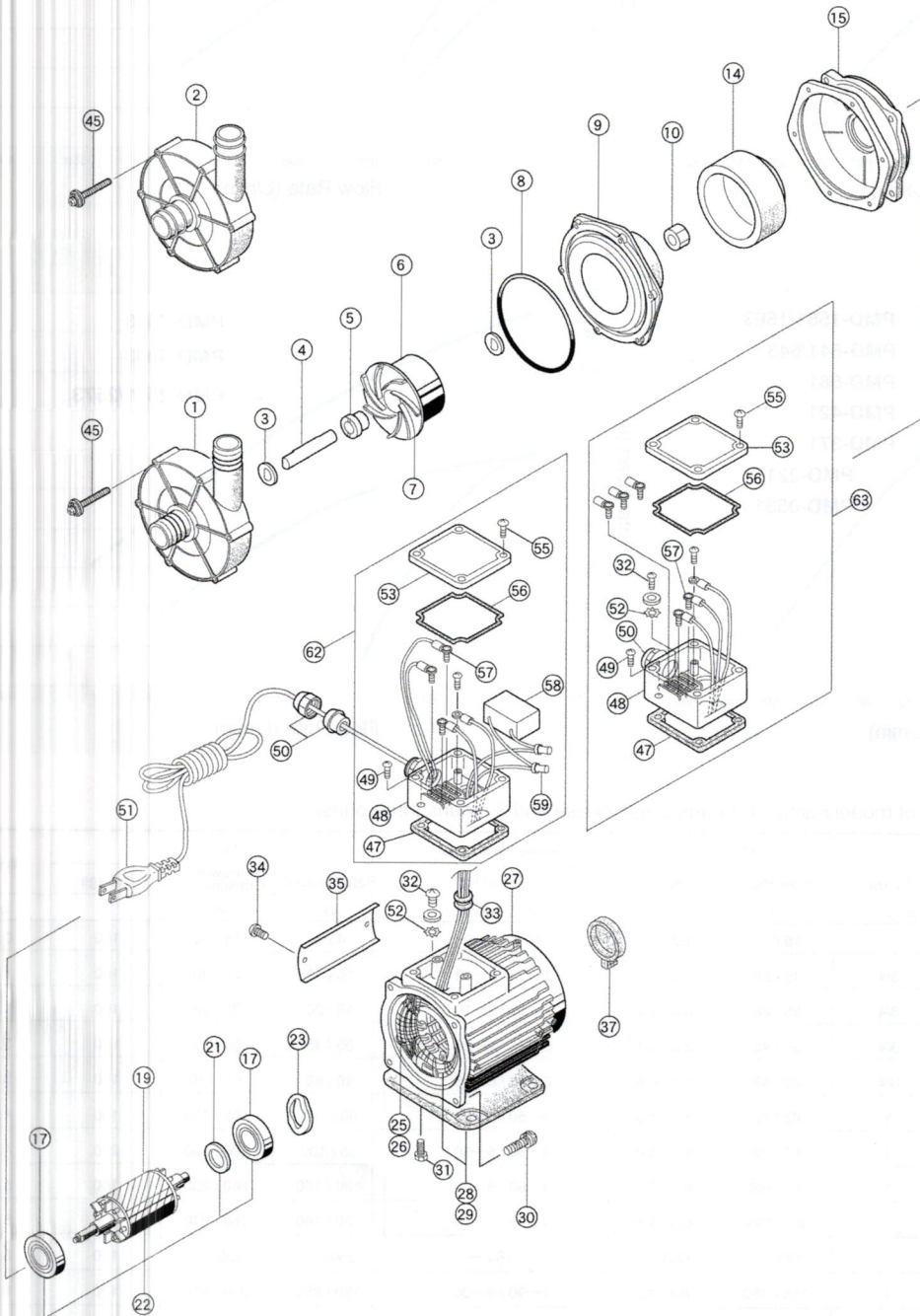
- Long life
- Complete liquid leakage free
- Excellent corrosion resistance
- Varieties of models

■ Materials for pump parts

Part name	For chemical liquids & sea water
Casing	Poly-Propylene with glass fiber
Back casing	Poly-Propylene with glass fiber
Impeller	Poly-Propylene with glass fiber
Pump shaft	Ceramic
Thrust washer	Ceramic
Bearing	Teflon
O-ring	FKM (Fluoro rubber)

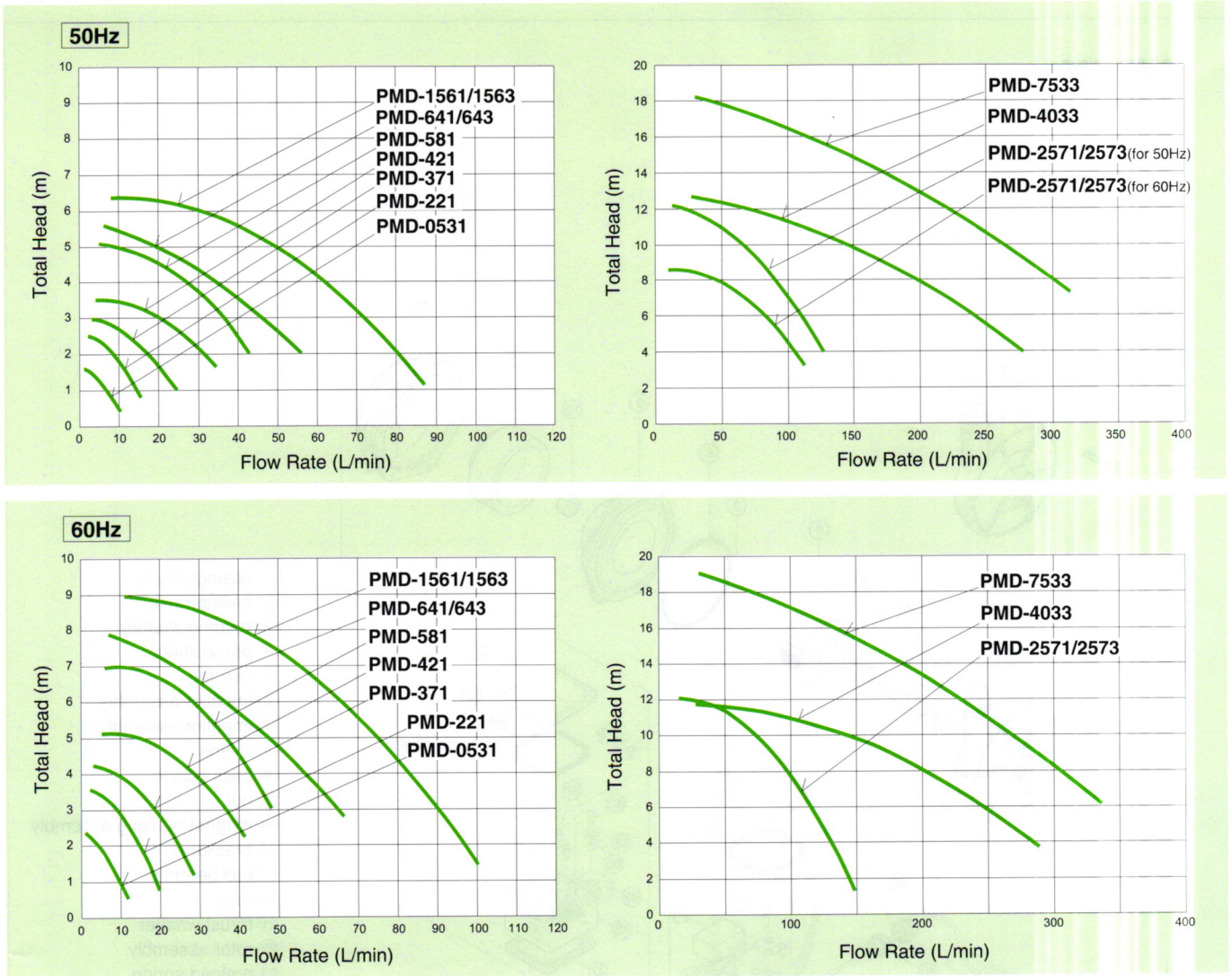
■ Outline

PMD-1561
PMD-1563



- ① casing(screw)
- ② casing(hose)
- ③ bearing washer
- ④ pump shaft
- ⑤ bearing
- ⑥ impeller assembly
- ⑦ impeller assembly
- ⑧ O-ring
- ⑨ back casing
- ⑩ nut
- ⑭ magnet housing assembly
- ⑮ bracket A
- ⑰ ball bearing
- ⑲ rotor
- ⑳ thrust washer
- ㉑ rotor assembly
- ㉒ preload spring
- ㉔ stator assembly for 100V
- ㉕ stator assembly for 200V
- ㉖ case B
- ㉘ case B assembly for 100V
- ㉙ case B assembly for 200V
- ㉚ screw (4P+16U)
- ㉛ bolt (6R+12S)
- ㉜ earth
- ㉝ cord bush
- ㉞ screw (for fixing the name plate)
- ㉟ plate for fixing the name plate
- ㊱ shaft cover
- ㊲ screw (for casing)
- ㊳ terminal box packing for motor
- ㊴ terminal box
- ㊵ screw
- ㊶ anti-water bush
- ㊷ power source cord assembly
- ㊸ washer
- ㊹ terminal box cover
- ㋀ screw
- ㋁ terminal box packing(with cover)
- ㋂ terminal
- ㋃ condenser
- ㋄ flat connector
- ㋅ terminal box assembly for 100V
- ㋆ terminal box assembly for 200V
- ㋇ motor assembly(15 to 28)for 100V
- ㋈ motor assembly(15 to 29)for 200V

Performance curve



Specification : Last figure of model name : 1 means single phase and 3 means three phase.

Model	Diameter		Maximum		Rated Flow Rate	Motor			Weight kg
	Hose A (mm)	Screw B (G—)	Flow Rate L / min	Head m	50Hz / 60Hz m-L / min	Rated Output W	Power Consumption W	Voltage V	
PMD-0531	14	—	10 / 12	1.7 / 2.5	1—6 / 1—9	4 / 6	18 / 20	100	0.7
PMD-221	14	3/4	15 / 20	2.5 / 3.6	1—13 / 2—13	10 / 15	22 / 30	100	1.7
PMD-371	17	3/4	25 / 28	3.0 / 4.2	2—18 / 3—19	15 / 20	32 / 43	100	1.7
PMD-421	20	3/4	35 / 42	3.5 / 5.1	3—21 / 4—26	35 / 45	55 / 75	100	3.4
PMD-581	20	3/4	43 / 48	5.1 / 6.8	3—35 / 5—35	40 / 60	70 / 110	100	3.4
PMD-641	26	1	62 / 72	5.7 / 8.0	3—50 / 5—50	65 / 100	105 / 155	100	4.8
PMD-643	26	1	62 / 72	5.7 / 8.0	3—50 / 5—50	65 / 100	100 / 150	200	4.7
PMD-1561	26	1	87 / 100	6.3 / 8.9	4—60 / 6—63	120 / 160	160 / 230	100	5.4
PMD-1563	26	1	87 / 100	6.3 / 8.9	4—64 / 6—70	120 / 160	160 / 240	200	5.0
PMD-2571 (50Hz)	26.5	1	125 / —	12.3 / —	8—75 / —	250 / —	430 / —	100	8.0
PMD-2571 (60Hz)	26.5	1	115 / 150	8.6 / 12	4—90 / 8—80	150 / 250	270 / 410	100	8.0
PMD-2573 (50Hz)	26.5	1	125 / —	12.3 / —	8—75 / —	250 / —	410 / —	200	7.5
PMD-2573 (60Hz)	26.5	1	115 / 150	8.6 / 12	4—90 / 8—80	150 / 250	260 / 400	200	7.5
PMD-4033 (50Hz)	40	1-1/2	300 / —	12.3 / —	10—140 / —	400 / —	540 / —	200	17.0
PMD-4033 (60Hz)	40	1-1/2	250 / 300	8.2 / 11.6	6—120 / 10—140	250 / 400	450 / 700	200	17.0
PMD-7533 (50Hz)	40	1-1/2	380 / —	18.2 / —	12—210 / —	750 / —	901 / —	200	21.0
PMD-7533 (60Hz)	40	1-1/2	330 / 380	13.4 / 19	7—220 / 12—225	450 / 750	601 / 1000	200	21.0

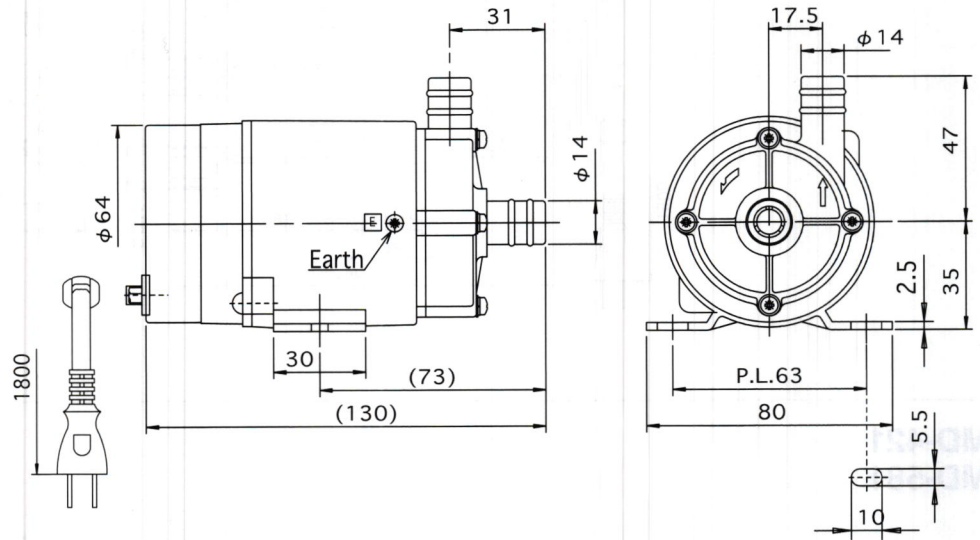
Conditions of liquids : Ambient Temp : 0 to 60°C Viscosity : below 30mm²/s, Specific Gravity : below 1.1

Note (1) Slurry liquids reduce life of pump. (2) Pressure shall be less than 100kPa. (3) Indoor use.

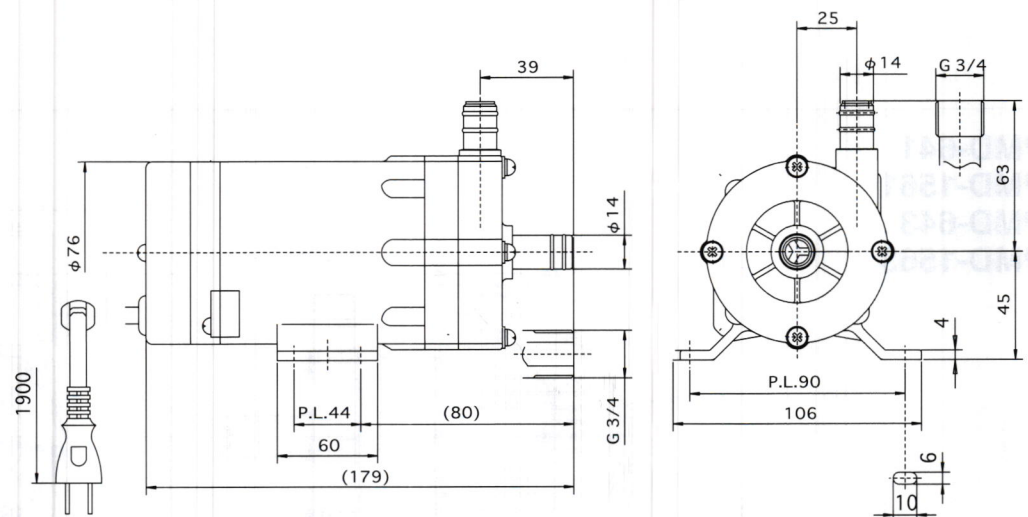
(4) Shock pressure and abnormal pressure etc will damage the pump part. (5) Voltage can be adjusted to customer's requirement.

Outline dimension

PMD-0531

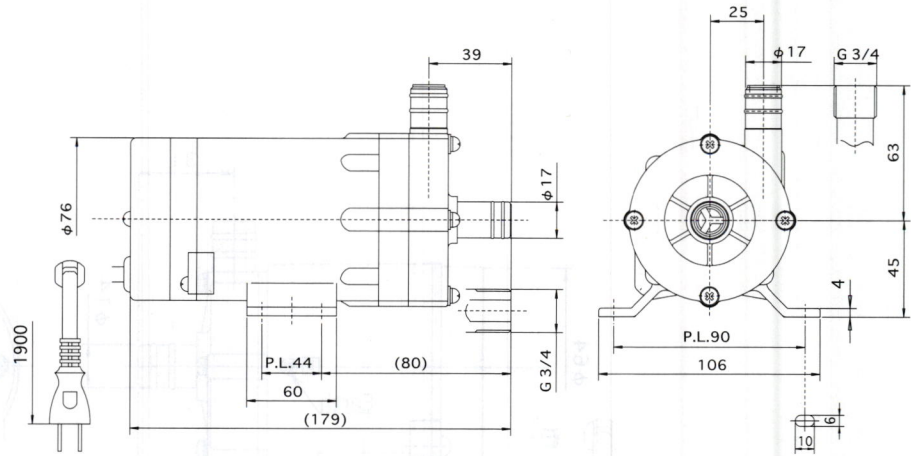


PMD-221

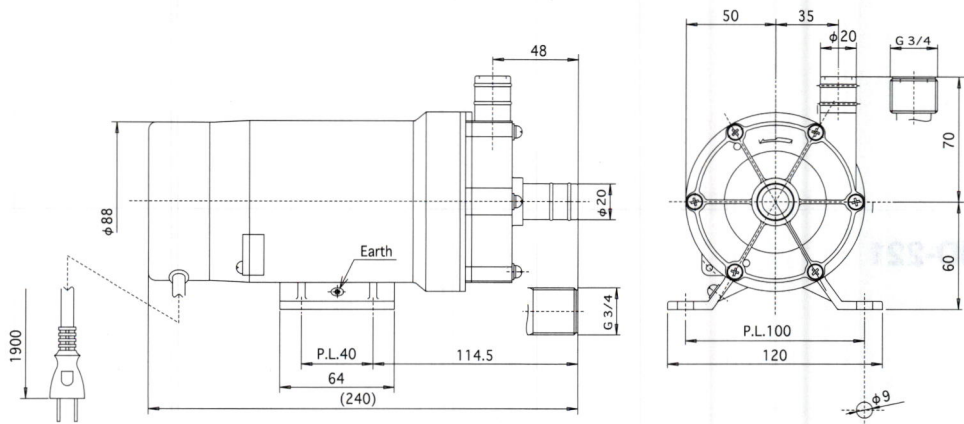


■ Outline dimension

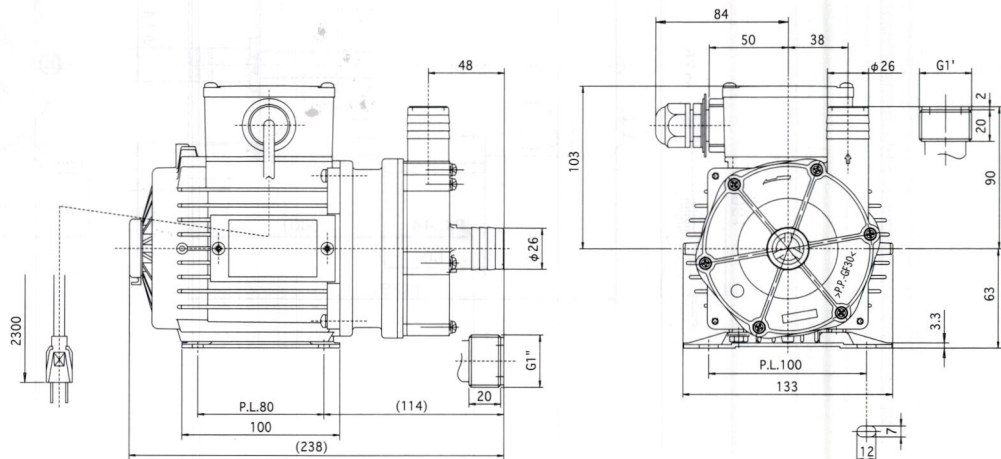
PMD-371



PMD-421
PMD-581

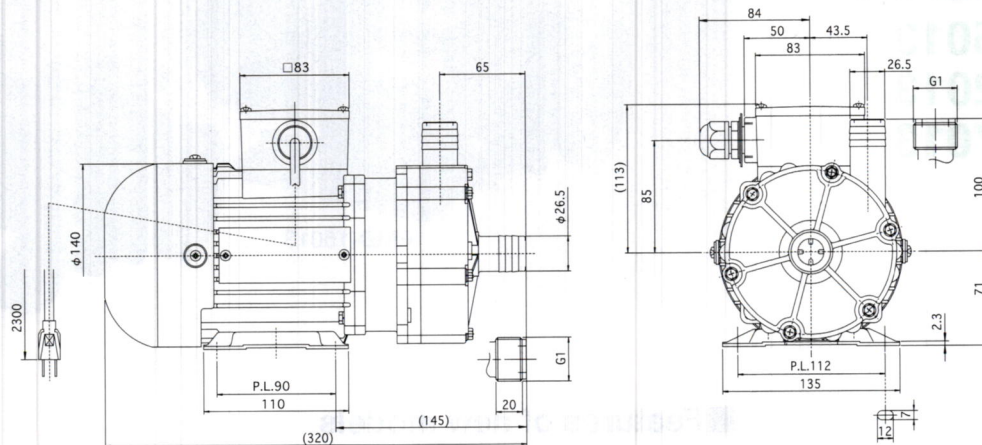


PMD-641
PMD-1561
PMD-643
PMD-1563

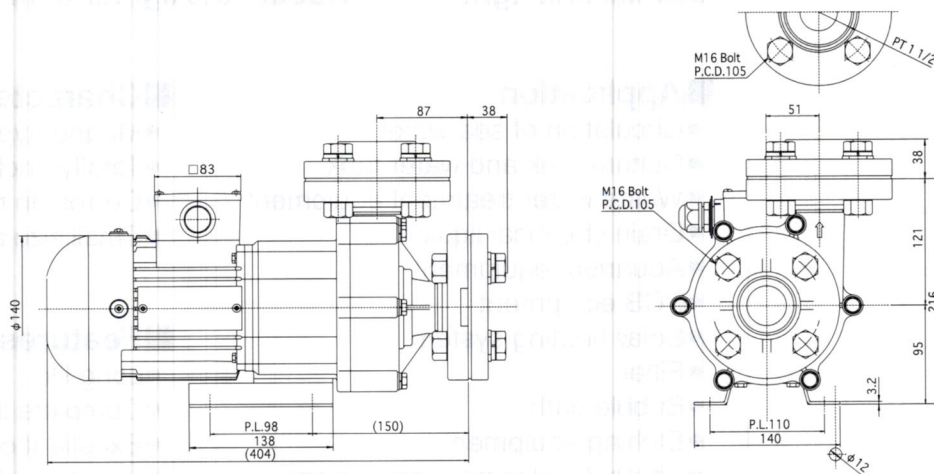


■ Outline dimension

**PMD-2571
PMD-2573**



PMD-4033



PMD-7533

